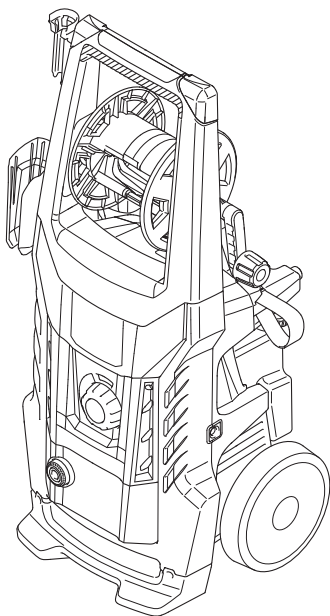




## 2.A DHS 2.A DHS PE



cod. 95916 Rev00\_11122020 - MK

High pressure washer

Original instructions

Idropulitrice alta pressione

Istruzioni originali

Водоструйная машина

Превод на оригиналните инструкции

Vysokotlaký čistič

Překlad originálního návodu

Højtryksrensér

Oversættelse af den originale brugsanvisning

Hochdruckreiniger

Übersetzung der Originalanleitung

Πυστικό μηχάνημα υψηλής πίεσης

Μετάφραση των γνήσιων οδηγιών

Hidrolimpiadora de alta presión

Traducción de las instrucciones originales

Kõrgsurvepesur

Originaaljuhendi tõlge

Korkeapainepesuri

Alkuperäisten ohjeiden käännös

Nettoyeur haute pression

Traduction des instructions originales

Visokotlačni uređaj za pranje

Prijevod izvorne upute

Nagynyomású tisztítóberendezés

Az eredeti utasítások fordítása

Aukšto slėgio plautuvas

Originalių instrukcijų vertimas

Augstspiediena mazgātājs

Orģinālās rokasgrāmatas tulkojums

Hogedrukreiniger

Vertaling van de originele gebruiksaanwijzing

Høytrykksvasker

Oversettelse av den originale bruksanvisningen

Myjka wysokociśnieniowa

Tłumaczenie oryginalu instrukcji

Lavadora a alta pressão

Tradução das instruções originais

Aparat de spălat cu înaltă presiune

Traducerea instrucțiunilor originale

Моечная машина высокого давления

Перевод оригинальных инструкций

Vysokotlakový čistič

Překlad původního návodu

Visokotlačni čistilec

Prevod izvirnih navodil

Högtryckstvätt

Översättning av bruksanvisning i original

Yüksek basınçlı yıkama makinesi

Orijinal talimatların tercümesi

Мийка високого тиску

Переклад оригінальна інструкція

EN

IT

BG

CS

DA

DE

EL

ES

ET

FI

FR

HR

HU

LT

LV

NL

NO

PL

PT

RO

RU

SK

SL

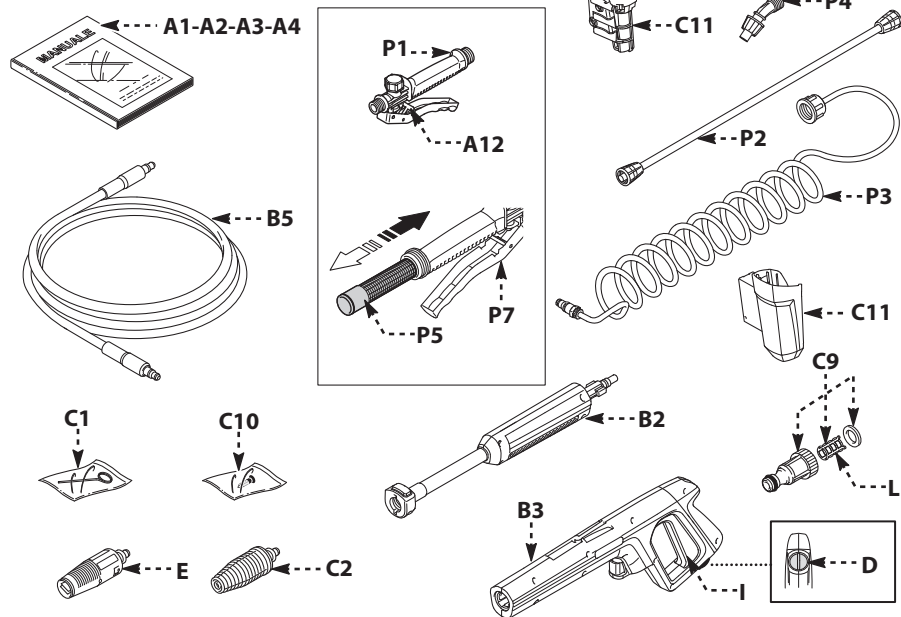
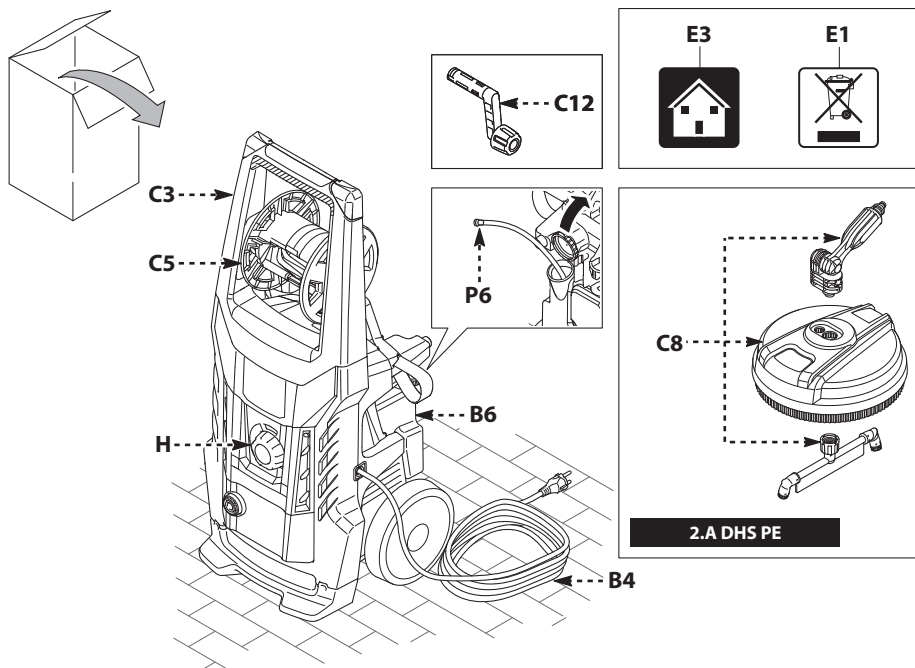
SV

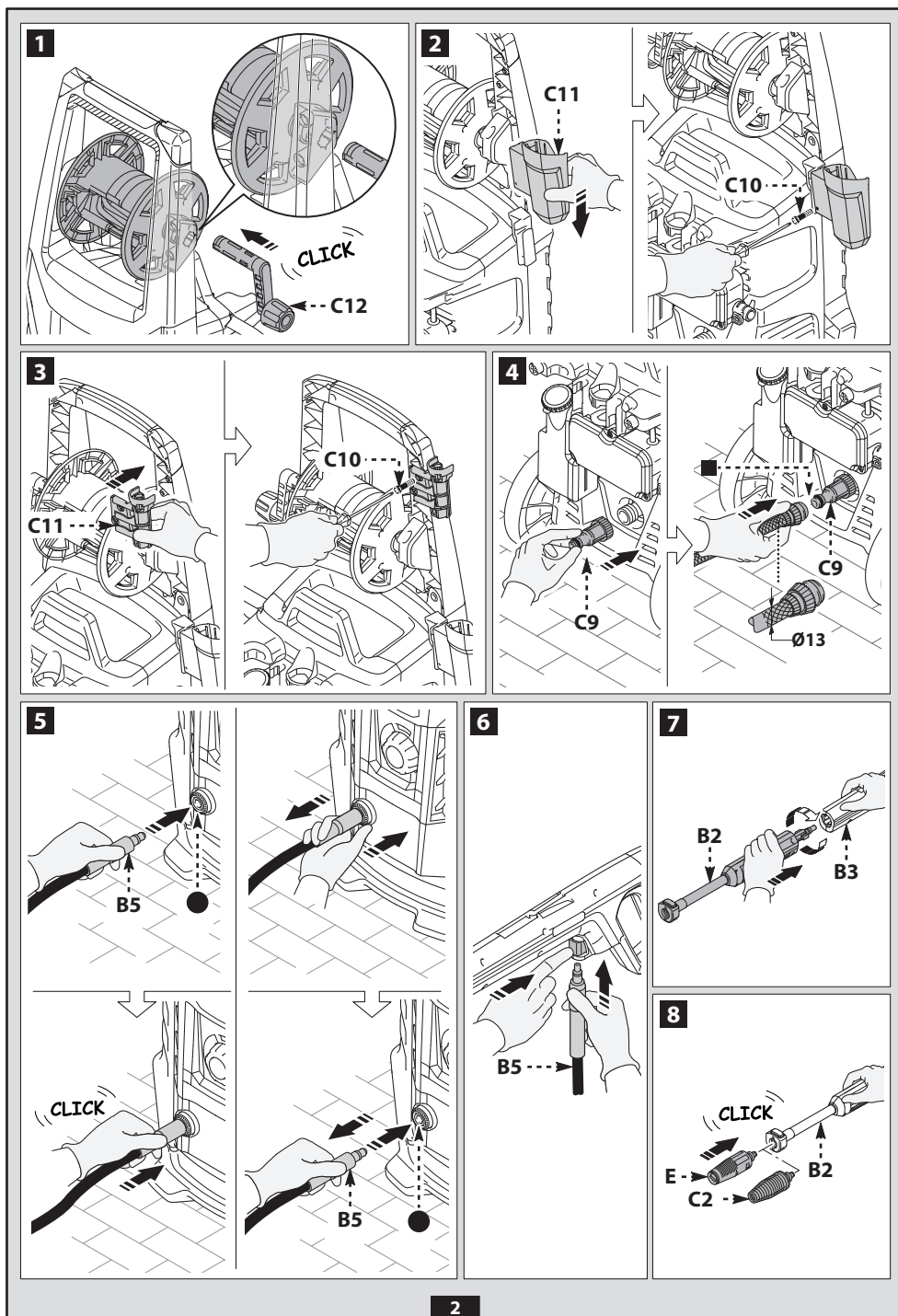
TR

UK

EN	Please read these instructions carefully before use. Please retain these instructions for future reference. In case of problems or difficulties, please contact the consumer helpline: <b>supporth@annovireverberi.it</b>	Page: 7-17
IT	Leggere attentamente queste istruzioni prima dell'uso. Conservare queste istruzioni per future consultazioni. In caso di problemi o difficoltà, contattate l'helpline consumatori: <b>supporth@annovireverberi.it</b>	Pagina: 18-29
BG	Прочетете внимателно тези указания преди употреба. Запазете тези указания за справка. При проблеми или затруднения се обрънете към отдела за обслужване на клиенти: <b>supporth@annovireverberi.it</b>	Страница: 30-42
CS	Před použitím si pozorně přečtěte tento návod. Laskavě si uložte tento návod pro budoucí použití. V případě jakýchkoli problémů nebo potíží laskavě kontaktujte linku pomoci zákazníkům: <b>supporth@annovireverberi.it</b>	Strana: 43-53
DA	Læs disse instruktioner omhyggeligt inden brug. Opbevar disse instruktioner til senere brug. Kontakt kundeservicetelefonen i tilfælde af problemer eller vanskeligheder: <b>supporth@annovireverberi.it</b>	Side: 54-64
DE	Lesen Sie bitte diese Bedienungsanleitung vor Gebrauch aufmerksam durch. Bewahren Sie diese Bedienungsanleitung sorgfältig auf, damit Sie sie auch später zu Rate ziehen können. Wenden Sie sich im Falle von Problemen bitte an die Verbraucher-Hotline: <b>supporth@annovireverberi.it</b>	Seite: 65-76
EL	Διαβάστε προσεκτικά αυτές τις οδηγίες πριν από τη χρήση. Φυλάξτε αυτές τις οδηγίες για μελλοντικές αναφορές. Σε περίπτωση προβλημάτων ή δυσκολιών, επικοινωνήστε με τη γραμμή helpline υποστήριξης καταναλωτών: <b>supporth@annovireverberi.it</b>	Σελίδα: 77-88
ES	Leer atentamente estas instrucciones antes de usar el equipo. Guardar estas instrucciones para poder consultarlas en el futuro. En caso de problemas o dificultades, ponerse en contacto con el servicio de asistencia al cliente: <b>supporth@annovireverberi.it</b>	Página: 89-100
ET	Enne kasutamist lugege see juhend tähelepanelikult läbi. Hoidke juhend hilisemaks kasutamiseks alles. Probleemide või raskuste ilmnemisel pöörduge klientide poole: <b>supporth@annovireverberi.it</b>	Lk: 101-111
FI	Lue ohjeet huolellisesti ennen käyttöä. Säilytä ohjeet huolellisesti tulevaa käyttöä varten. Jos kohtaat ongelmia, ota yhteys kuluttajien helpline-palveluun: <b>supporth@annovireverberi.it</b>	Sivu: 112-122
FR	Lire attentivement ces instructions avant emploi. Conserver ces instructions pour toute consultation à venir. En cas de problèmes ou de difficultés, contacter l'assistance consommateur : <b>supporth@annovireverberi.it</b>	Page: 123-134
HR	Molimo vas da prije uporabe pažljivo pročitate ovaj priručnik. Sačuvajte ove upute za buduće korištenje. Ako nađete na kakve probleme ili poteškoće, molimo vas da se obratite službi za podršku korisnicima: <b>supporth@annovireverberi.it</b>	Stranica: 135-146
HU	A készülék használatba vétele előtt gondosan olvassa el az útmutatót. A későbbi hivatkozások érdekében őrizze meg az útmutatót. Kérdés vagy probléma esetén forduljon ügyfélszolgálatunkhoz: <b>supporth@annovireverberi.it</b>	147-158. oldal
LT	Prieš pradėdami naudoti įrenginį, atidžiai perskaitykite šias instrukcijas. Išsaugokite šias instrukcijas, kad bet kada galėtumėte jas vėl perskaityti. Jei kyla problemų arba sunkumų, kreipkitės į klientų pagalbos liniją: <b>supporth@annovireverberi.it</b>	Puslapiai: 159-169
LV	Pirms lietošanas, lūdz, rūpīgi izlasiet šo pamācību. Lūdz, saglabāiet šos norādījumus turpmākai uzzīpai. Ja rodas kādas problēmas vai grūtības, lūdz, sazinieties ar klientu palīdzības dienestu: <b>supporth@annovireverberi.it</b>	Lappuse: 170-180
NL	Lees deze gebruiksaanwijzing vóór het gebruik aandachtig door. Bewaar deze gebruiksaanwijzing voor latere raadpleging. Contacteer bij problemen of moeilijkheden de hulplijn voor de gebruikers: <b>supporth@annovireverberi.it</b>	Pagina: 181-192
NO	Les disse instruksjonene nøye før bruk. Ta vare på instruksjonene for senere bruk. Ved problemer eller vanskeligheter, kontakt kundeservice: <b>supporth@annovireverberi.it</b>	Side: 193-203
PL	Przed użyciem należy uważnie przeczytać niniejszą instrukcję obsługi. Instrukcję należy zachować na przyszłość. W razie jakichkolwiek problemów lub trudności można skontaktować się z działem pomocy technicznej pod adresem: <b>supporth@annovireverberi.it</b>	Strona: 204-215
PT	Leia atentamente estas instruções antes de utilizar o aparelho. Conserve estas instruções para consultas futuras. Em caso de problemas ou dificuldades, contacte a helpline de atendimento aos consumidores: <b>supporth@annovireverberi.it</b>	Página: 216-227
RO	Vă rugăm să citiți cu atenție aceste instrucțiuni înainte de a utiliza. Vă rugăm să păstrați aceste instrucțiuni pentru consultarea pe viitor. În caz de probleme sau dificultăți, vă rugăm să contactați linia de asistență a clienților: <b>supporth@annovireverberi.it</b>	Pagina: 228-239
RU	Внимательно прочитайте эти инструкции до начала использования. Сохраните инструкции для пользования ими в будущем. При появлении проблем или затруднений обращайтесь в отдел обслуживания клиентов: <b>supporth@annovireverberi.it</b>	Страница: 240-251
SK	Pred použitím si, prosím, pozorne prečítajte tento návod. Tento návod si odložte na použitie v budúcnosti. Ak narazíte na akékoľvek problémy alebo ťažkosti, obráťte sa na linku pomoci pre zákazníkov: <b>supporth@annovireverberi.it</b>	Strana: 252-262
SL	Pred uporabo pazljivo preberite ta navodila. Ta navodila shranite za prihodnjo uporabo. Če naletite na težave, se obrnite na službo za pomoč kupcem: <b>supporth@annovireverberi.it</b>	Stran: 263-273
SV	Läs bruksanvisningen noggrant före användning. Förvara bruksanvisningen för framtida bruk. Vid ev. problem eller frågeställningar, kontakta kundtjänst på <b>supporth@annovireverberi.it</b>	Sid.: 274-284
TR	Kullanmadan önce, bu talimatları dikkatlice okuyunuz. Bu talimatları, ileride danışmak için saklayınız. Problem veya zorluk durumunda, tüketici yardım hattına başvurunuz: <b>supporth@annovireverberi.it</b>	Sayfa: 285-296
UK	Перед експлуатацією уважно прочитайте цю інструкцію. Зберігайте цю інструкцію для подальшого використання в довідкових цілях. У разі виникнення проблем або труднощів звертайтеся до нашої служби підтримки: <b>supporth@annovireverberi.it</b>	Сторінки: 297-308

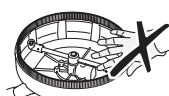
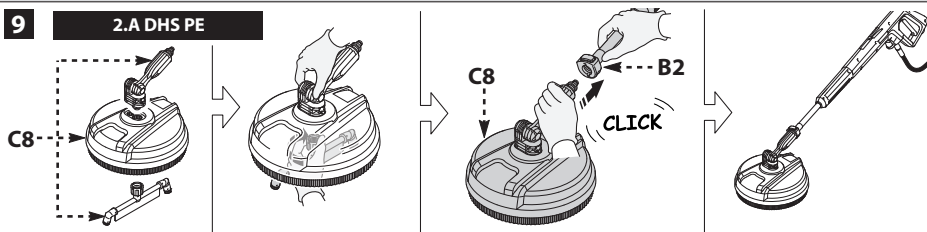




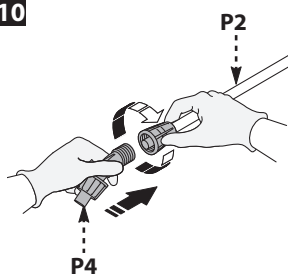


9

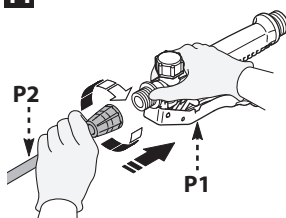
2.A DHS PE



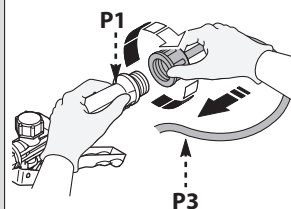
10



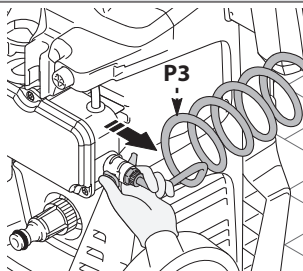
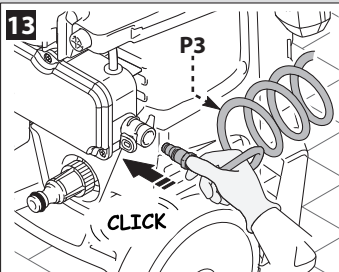
11



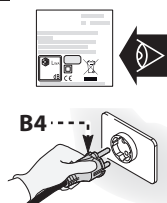
12



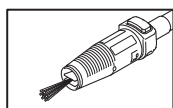
13



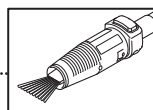
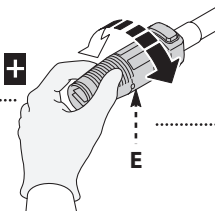
14



2



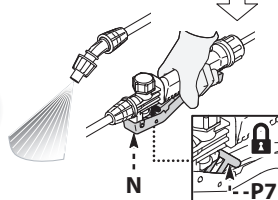
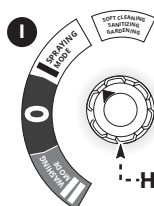
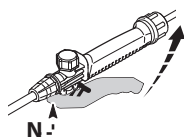
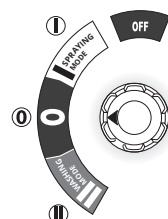
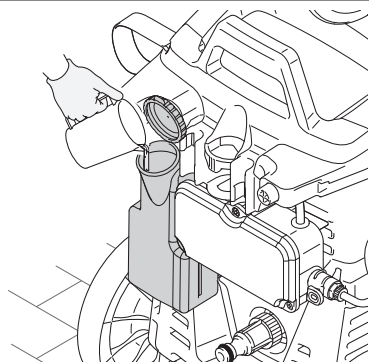
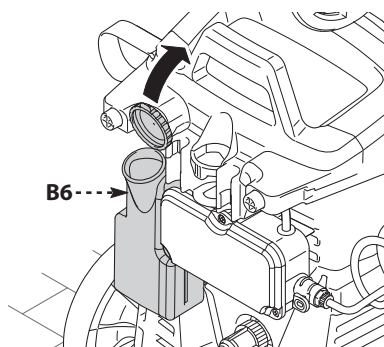
+



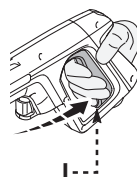
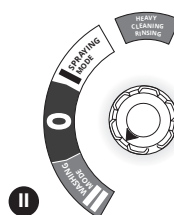
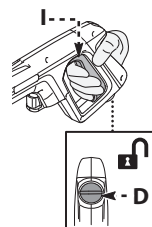
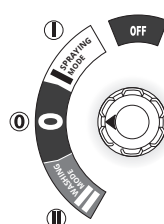
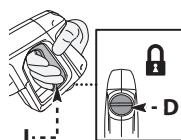
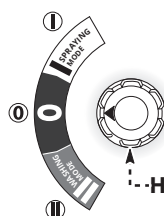
3



## SPRAYING MODE



## WASHING MODE



## 1 SAFETY INSTRUCTIONS


- 1.1** The machine you have purchased is a technologically advanced product manufactured by one of the leading European producers of high pressure washers. This information is provided to enable you to get the best from your machine; please read it carefully and always comply with its recommendations. During connection, use and servicing of the machine, take all possible precautions to protect your own safety and that of the people in the immediate vicinity. Read the safety regulations carefully and comply with them on all occasions; failure to do so may put health and safety at risk or cause expensive damage.

## 2 SAFETY SIGNS

- 2.1** Comply with the instructions provided by the safety signs fitted to the machines and those contained in this manual.  
The machine and manual only feature the symbols relevant to the model purchased. Check that the symbols and signs affixed to the machine are always present and legible; otherwise, fit replacements in the original positions.

 Warning - Danger

 Please read these instructions carefully before use.

 E3 symbol (if symbol appears in fig.1) - Indicates that the machine is intended for non-professional (domestic) use. This machine may be used by persons with impaired physical, sensory or mental capabilities, or who do not have the necessary experience and knowledge, if they are under supervision or have been instructed in the safe use of the machine and understand the risks involved.

 Moving parts. Do not touch.

**0** Switch "OFF" position


**I** Switch "ON" position (sprayer function)

**II** Switch "ON" position (high pressure washer function)



Guaranteed sound power level



 Prohibition sign, informs users that local regulations may prohibit connection of the product to the drinking water supply system.



Danger sign, warns users not to direct the water jet at people, animals, electrical equipment or the product itself.



This product is rated in insulation class II. This means that it has reinforced or double insulation (only if the symbol appears on the machine).

 The product complies with the relevant European directives.



E1 symbol - Indicates that the machine **must not be disposed of** as municipal waste; it may be handed in to the dealer on purchase of a new machine. The machine's electrical and electronic parts must not be reused for improper uses since they contain substances which constitute health hazards.



Wear ear defenders.



Wear a protective mask.



Wear respiratory protection.



Wear protective gloves.



Wear safety footwear.



Wear protective clothing.



Keep other people at a safe distance from the machine during use.





### 3 SAFETY RULES/RESIDUAL RISKS

#### 3.1 SAFETY "DO NOTS" (high pressure washer function)

- 3.1.1 **WARNING.** DO NOT allow children to use the machine; supervise them to ensure that they do not play with it.
- 3.1.2 **WARNING.** High pressure jets may be dangerous if incorrectly used.
- 3.1.3 **WARNING.** DO NOT use the machine with flammable or toxic liquids, or any products which are not compatible with its correct operation. Use of the machine in a potentially inflammable or explosive atmosphere is forbidden.
- 3.1.4 **WARNING.** EXPLOSION HAZARD. DO NOT use the machine to spray flammable liquids.
- 3.1.5 **WARNING.** DO NOT point the water jet at people or animals.
- 3.1.6 **WARNING.** DO NOT point the water jet at the machine itself, electrical parts or other electrical equipment.
- 3.1.7 **WARNING.** DO NOT use the machine with people within its range of action unless they are wearing protective clothing.
- 3.1.8 **WARNING.** DO NOT point the jet at yourself or others to clean clothing or footwear.
- 3.1.9 **WARNING.** DO NOT use the machine outdoors when it is raining.
- 3.1.10 **WARNING.** The machine **MUST NOT** be operated by children, incompetent persons or anyone who has not read and understood the instructions.
- 3.1.11 **WARNING.** DO NOT touch the plug and/or socket with wet hands.
- 3.1.12 **WARNING.** DO NOT use the machine if the power cable is damaged. If the power cable is damaged, it must be replaced by the manufacturer, one of its Authorised Service Centres or similarly qualified persons in order to avoid a safety hazard.
- 3.1.13 **WARNING.** DO NOT use the machine if a power cable or important parts such as the safety devices, high pressure hoses or trigger gun are damaged.
- 3.1.14 **WARNING.** DO NOT jam the gun trigger in the operating position.
- 3.1.15 **WARNING.** Check that the data plate is affixed to the machine; if not, inform your dealer. Machines without data plates must NOT be used as they are unidentifiable and potentially dangerous.
- 3.1.16 **WARNING.** DO NOT tamper with or adjust the setting of the regulating valve or the safety devices.
- 3.1.17 **WARNING.** DO NOT alter the original diameter of the nozzle jet.
- 3.1.18 **WARNING.** DO NOT move the machine by pulling on the POWER CABLE.
- 3.1.19 **WARNING.** Do not allow vehicles to drive over the high pressure hose.



- 3.1.20 WARNING.** DO NOT move the machine by pulling on the high pressure hose.
- 3.1.21 WARNING.** When directed towards tyres, tyre valves or other pressurised components, the high pressure jet is potentially dangerous. Do not use the rotary nozzle kit, and always keep the jet at a distance of at least 30 cm during cleaning.
- 3.1.22 WARNING.** The use of non-original accessories and any other accessories not specifically intended for the model in question is prohibited. All modifications to the machine are prohibited; any modifications shall render the Declaration of Conformity null and void and relieve the manufacturer of all liability under civil and criminal law.
- 3.2 SAFETY "DO NOTS" (sprayer function)**
- 3.2.1** Do not use this machine unless the relative staff are wearing protective clothing such as eye protection (glasses or mask) and respiratory protection.
- 3.2.2** Do not sluice yourself or other people with water to clean your clothes, shoes and socks.
- 3.2.3** Use of the machine by children, teenagers, pregnant women and unskilled staff is strictly prohibited. Keep the machine a safe distance from children and animals.
- 3.2.4** Do not spray near water containing fish.
- 3.2.5** Do not use the machine if you are tired, unwell or under the influence of alcohol, drugs or medicines which may affect your physical and mental state.
- 3.2.6** Eating, drinking or smoking during use of the machine is strictly prohibited. Do not breathe in vapours or droplets of the chemical solution. In case of contact, seek medical advice at once.
- 3.2.7** Do not use the machine if parts are damaged and/or in poor condition. Only use genuine spare parts recommended by the manufacturer.
- 3.2.8** Do not tamper with or modify the machine, or pressurise it with other devices.
- 3.2.9** Do not use the machine in locations with a potential explosion or fire risk.
- 3.2.10** Do not use the machine with a high temperature for a long period of time.
- 3.2.11** Do not direct the machine's jet at live electrical parts or at itself to avoid the risk of short circuit.
- 3.2.12** Do not immerse the machine in water to wash it or spray it with water.
- 3.2.13** Do not use solvents, strongly acidic or alkaline solutions and/or flammable liquids with the machine.
- 3.2.14** Do not use the machine when the temperature drops below 0 °C. The warranty does not cover frost damage.



**3.2.15** Do not allow chemicals to disperse in the environment. Do not allow water and chemical solutions to disperse in the environment when rinsing and cleaning the machine.

### **3.3 SAFETY “MUSTS” (high pressure washer function)**

**3.3.1 WARNING.** All electrical conductors **MUST BE PROTECTED** against the water jet.

**3.3.2 WARNING.** The electric supply connection must be made by a qualified electrician and comply with IEC 60364-1. Either a residual current device that will cut off the power supply if the leakage current to earth exceeds 30 mA for 30 ms or a ground fault interrupt device must be installed.

**3.3.3 WARNING.** DURING start-up, the machine may cause network noise.

**3.3.4 WARNING.** Use of a residual current device will provide additional protection for the operator (30 mA).

**3.3.5 WARNING.** Models supplied without plug must be installed by qualified staff.

**3.3.6 WARNING.** Use only approved electrical extension leads with suitable conductor cross-section.

**3.3.7 WARNING.** Always turn off the switch when leaving the machine unattended.

**3.3.8**      

**WARNING.** High pressure may cause parts to rebound: wear all the protective clothing (PPE) and equipment needed to ensure the operator's safety.

**3.3.9 WARNING.** Before doing work on the machine, **REMOVE** the plug.

**3.3.10 WARNING.** Before pressing the trigger, **GRIP** the trigger gun firmly to counteract the recoil.

**3.3.11 WARNING.** **COMPLY WITH** the local water supply authority regulations. Under IEC 60335-2-79, the machine may only be connected to the mains drinking water supply if the supply hose is fitted with a backflow preventer valve with drain facility corresponding to EN 12729 type BA. The backflow preventer device may be ordered from the manufacturer.

**3.3.12 WARNING.** Water that has passed through backflow preventers is considered to be non-potable.

**3.3.13 WARNING.** Maintenance and/or repair of electrical components **MUST** be carried out by qualified staff.

**3.3.14 WARNING.** **DISCHARGE** residual pressure before disconnecting the hose from the machine.



- 3.3.15 WARNING.** CHECK before each use and at regular intervals that the screws are fully tightened and that there are no broken or worn parts.
- 3.3.16 WARNING.** ONLY USE detergents which will not corrode the coating materials of the high pressure hose / power cable.
- 3.3.17 WARNING.** KEEP people or animals at least 15 m away.
- 3.3.18 WARNING.** This machine is designed for use with the detergents supplied or recommended by the manufacturer. The use of other detergents or chemicals may adversely affect the machine's safety.
- 3.3.19 WARNING.** Do not allow the detergent to come into contact with the skin, and the eyes in particular! In case of contact with eyes, rinse with plenty of water and seek medical advice at once!
- 3.3.20 WARNING.** High pressure hoses, fittings and joints are important for the machine's safety. Use only high pressure hoses, fittings and joints recommended by the manufacturer.
- 3.3.21 WARNING.** To ensure the machine's safety, only use the manufacturer's genuine parts, or other parts which carry its approval.
- 3.3.22 WARNING.** If an extension cable is used, the plug and socket must be watertight
- 3.3.23 WARNING.** Unsuitable extension cables can be dangerous. If an extension cable is used, it must be suitable for outdoor use, and the connection must be kept dry and off the ground. Use of a power cable reel which keeps the socket at least 60 mm above the ground is strongly recommended.
- 3.3.24 WARNING.** Switch the machine off and disconnect it from the power supply before assembly, cleaning, adjustments, maintenance, storage and transportation.
- 3.3.25 WARNING.** Insert the drain pipe cleaning kit down to the red mark before turning the machine on.
- 3.4 SAFETY "MUSTS" (sprayer function)**
- 3.4.1** The machine must be used in well ventilated locations.
- 3.4.2** Comply strictly with safety regulations for the use of pesticides.
- 3.4.3** Only use products approved by the competent authorities and comply strictly with the instructions supplied by the producer on their packaging.
- 3.4.4** Wash your hands, face and clothes after use.



**4 GENERAL INFORMATION (FIG.1)/PAGE 3****4.1 Use of the manual**

The manual forms an integral part of the machine and should be kept for future reference. Please read it carefully before installing/using the machine. If the machine is sold, the seller must pass on this manual to the new owner along with the machine.

**4.2 Delivery**

The machine is delivered partially assembled in a cardboard box. The supply package is illustrated in fig.1.

**4.2.1 Documentation supplied with the machine**

- A1** Use and maintenance manual
- A2** Safety instructions
- A3** Declaration of conformity
- A4** Warranty regulations

**4.3 Disposing of packaging**

The packaging materials are not environmental pollutants but must still be recycled or disposed of in compliance with the relevant legislation in the country of use.

**5 TECHNICAL INFORMATION (FIG.1)/PAGE 3****5.1 Intended use**

The machine is intended for personal use for cleaning vehicles, machinery, boats, masonry, etc., for removing stubborn dirt with clean water and biodegradable chemical detergents, and as a sprayer for aqueous solutions.

Vehicle engines may be washed only if the dirty water is disposed of as per regulations in force.

- Inlet water temperature: **see machine data plate.**
- Inlet water pressure: **min. 0.1 MPa - max. 1 MPa.**
- Operating ambient temperature: **above 0 °C.**

The machine is compliant with the IEC 60335-1 and IEC 60335-2-79 standards.

**5.2 Operator**

The symbol in fig.1 identifies the machine's intended operator (professional or non-professional).

**5.3 Main components**

- B2** Lance
- B3** Trigger gun with safety catch
- B4** Power cable with plug
- B5** High pressure hose
- B6** Solution tank
- E** Nozzle
- L** Water filter
- N** Sprayer control lever

**5.3.1 Accessories (where supplied - see fig.1)**

- |                                   |                              |
|-----------------------------------|------------------------------|
| <b>C1</b> Nozzle cleaning tool    | <b>C12</b> Lever             |
| <b>C2</b> Rotary nozzle kit       | <b>C13</b> Detergent kit     |
| <b>C3</b> Handle                  | <b>C14</b> Wheels            |
| <b>C4</b> Brush                   | <b>P1</b> Grip               |
| <b>C5</b> Hose reel               | <b>P2</b> Lance              |
| <b>C6</b> Water suction kit       | <b>P3</b> Delivery hose      |
| <b>C7</b> Drain pipe cleaning kit | <b>P4</b> Sprayer nozzle     |
| <b>C8</b> Large surface brush kit | <b>P5</b> Trigger gun filter |
| <b>C9</b> Adaptor                 | <b>P6</b> Tank filter        |
| <b>C10</b> Screws                 | <b>P7</b> Lever catch        |
| <b>C11</b> Brackets               |                              |

**5.4 Safety devices**

- Starter device (H)

The starter device prevents accidental use of the machine.

**Warning - danger!**

**Do not tamper with or adjust the safety valve setting.**

- Safety and/or relief valve.

The safety valve is also a relief valve. When the gun trigger is released, the valve opens and the water recirculates through the pump inlet or is discharged onto the ground.

- Safety catch (D): prevents accidental spraying of water.
- Overload cutout: stops the machine in case of overload.

**6 INSTALLATION (FIG.2)/PAGE 4****6.1 Assembly****Warning - danger!**

**All installation and assembly operations must be performed with the machine disconnected from the mains power supply.**

The assembly sequence is illustrated in fig.2.

**6.2 Assembling the rotary nozzle**

(For models with this feature).

The rotary nozzle kit delivers greater washing power.

Use of the rotary nozzle may cause a reduction in pressure of 25% compared to the pressure obtained with the adjustable spray nozzle. However, the rotary nozzle delivers greater washing power due to the rotation of the water jet.

**6.3 Electrical connection****Warning - danger!**

**Check that the electrical supply voltage and frequency (V-Hz) correspond to those specified on the data plate (fig.2).**

**6.3.1 Use of extension cables**

The cross-section of the extension cable should be proportionate to its length; the longer it is, the greater its cross-section should be. See table I.

**6.4 Water supply connection (high pressure washer function)****Warning - danger!**

**Only clean or filtered water should be supplied to the machine. The flow rate of the water inlet tap must be equal to that of the pump.**

Place the machine as close to the water supply system as possible.

**6.4.1 Connection points**

- Water outlet (OUTLET)
- Water inlet with filter (INLET)

**6.4.2 Connection to the mains water supply**

The machine may only be connected directly to the mains drinking water supply if the supply hose is fitted with a backflow preventer valve with drain facility as per current regulations in force. Make sure that the hose is at least Ø 13 mm, that it is reinforced and that it is not more than 25 m long.

**6.4.3 Sucking in water from open tanks**

- 1) Screw the suction hose with filter to the water inlet (INLET) and insert it down to the bottom of the tank.

- 2) Vent the air from the machine:

- a) Unscrew the lance.
- b) Start the machine and keep the trigger gun open until there are no air bubbles in the water flowing out.
- 3) Switch the machine off and screw the lance back on.

N.B.: the maximum suction height is 0.5 m. The suction hose should be filled before use.

**7 ADJUSTMENTS (FIG.3)/PAGE 5****7.1 Adjusting the nozzle (for models with this feature)**

The water jet is adjusted by regulating the nozzle (E).

**8 INFORMATION ON USE OF THE MACHINE (FIG.4)/PAGE 6****Warning - danger!**

**Ensure that the machine is standing on a firm, solid surface. The machine must be used in the upright position. Do not cover the machine or use it in locations with poor ventilation.**



**IMPORTANT! Do not use the machine without water; dry running may damage the pump.**

### 8.1.1 Controls (sprayer function)

- Starter device (H).
- Water jet control lever (N).

### 8.1.2 Preparation

Fill the tank (B6). Test the machine with clean water before adding chemical solutions. Prepare the chemical solution in an external vessel. Pour the solution into the tank (B6). Do not fill the tank above the maximum level marked.

Close the plug firmly. If switching to a different solution, clean the tank with clean water. Do not allow the rinsing water to disperse into the environment.

### 8.1.3 Start-up

Set the starter device (H) on (ON/I sprayer function). Press the grip (P1) to turn on the flow; secure the safety catch (A12) to keep the flow open.

### 8.1.4 Stopping

Release the grip (P1) and set the starter device (H) on (O) to stop the machine.



**IMPORTANT! Do not keep the machine running with the grip released for more than 5 minutes.**

### 8.1.5 Storage

Release the grip (P1) and set the starter device (H) on (O) to stop the machine and discharge the pressure from the grip. Transfer the remaining solution to an external vessel and store in accordance with the producer's instructions. Do not disperse the remaining solution in the environment after use. Rinse the machine with clean water and leave it to dry after use prior to storage to extend its lifetime. Many solutions may dry out and set if left in the tank, blocking the nozzle, valve and hose.

### 8.2.1 Controls (high pressure washer function)

- Starter device (H).
- Water jet control lever (I).

### 8.2.2 Start-up (see fig.4)

- 1) Turn on the water supply tap fully.
  - 2) Release the safety catch (D).
  - 3) Depress the gun trigger for a few seconds and start up the machine using the starter device (ON/I).
- when the gun trigger is **released** the dynamic pressure automatically cuts out the motor;
  - when the gun trigger is **depressed** the drop in pressure automatically starts the motor and the pressure is restored after a very slight delay;
  - if the machine is to function correctly, all gun trigger **releasing** and **depressing** operations must be **at least** 4-5 seconds apart.

**To prevent damage to the machine, do not allow it to operate dry and check that it is properly supplied with water at all times.**

### 8.2.3 Stopping

- 1) Set the starter device on (OFF/O).
- 2) Depress the gun trigger and discharge the residual pressure inside the pipes.
- 3) Engage the safety catch (D).

### 8.2.4 Restarting

- 1) Release the safety catch (D).
- 2) Depress the gun trigger and discharge the residual air inside the pipes.
- 3) Set the starter device on (ON/I).

### 8.2.5 Storage

- 1) Turn off the water supply tap.
- 2) Discharge the residual pressure from the trigger gun until all the water has come out of the machine.
- 3) Switch the machine off (OFF/O).
- 4) Remove the plug from the socket.
- 5) Engage the trigger gun safety catch (D).

### 8.2.6 Recommended cleaning procedure

Dissolve dirt by applying the detergent to the surface while still dry. When dealing with vertical surfaces work from the bottom upwards. Leave the detergent to act for 1-2 minutes but do not allow the surface to dry. Starting from the bottom, use the high pressure jet at a minimum distance of 30 cm. Do not allow the rinse water to run onto unwashed surfaces.

In some cases, scrubbing with brushes is needed to remove dirt.

High pressure is not always the best solution for good washing results, since it may damage some surfaces. The needle jet setting of the adjustable spray nozzle and the rotary nozzle should not be used on delicate or painted parts, or on pressurised components (e.g. tyres, inflation valves, etc.).

Effective cleaning depends on both the pressure and volume of the water used, to the same degree.

## 9 MAINTENANCE (FIG.5)/PAGE 311

Any maintenance operations not covered by this chapter should be carried out by an Authorised Sales and Service Centre.



### **Warning - danger!**

**Always disconnect the plug from the power socket before carrying out any work on the machine.**

### 9.1 Cleaning the nozzle (high pressure washer function)

- 1) Disconnect the lance from the trigger gun.
- 2) Remove any dirt from the hole in the nozzle (E-C2) using the tool (C1).

### 9.2 Cleaning the nozzle (sprayer function)

- 1) Remove the nozzle (P4).
- 2) Rinse with clean water.

### 9.3 Cleaning the filter (high pressure washer function)

Inspect the inlet filter (L) before each use, and clean in accordance with the instructions if necessary.

### 9.4 Cleaning the filters (sprayer function)

Always clean the filters. Clean the trigger gun filter (P5) after each use. If the jet flow rate falls, unscrew the ring-nut at the base of the grip (P1), remove the filter (P5) inside the trigger gun, rinse it with clean water and put it back in place.

Clean the tank filter (P6) after each use. Open the tank plug (B6), extract the suction hose, remove the filter (P6), rinse it with clean water and put it back in place.

### 9.5 End-of-season storage

Before putting the machine into store for the winter, run it with non-aggressive, non-toxic antifreeze.

Store it in a dry place, protected from frost.

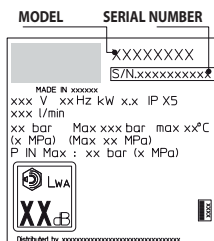
## 10 STORAGE AND TRANSPORTATION (FIG. 5)/PAGE 311

Store the accessories as shown in fig.5.

Transport the machine as shown in fig.5.

## 11 TROUBLESHOOTING

High pressure washer function		
Problems	Probable causes	Remedies
Pump does not reach working pressure	Worn nozzle	Replace nozzle
	Water filter fouled	Clean filter (L) (fig.5)
	Insufficient water supply	Turn on water supply tap fully
	Air being sucked into system	Check tightness of hose fittings
	Air in pump	Switch off the machine and keep depressing and releasing the gun trigger until the water jet is steady. Switch the machine back on again.
	Nozzle not regulated correctly	Set nozzle (E) to (+) (fig.3)
	Water being sucked from an open tank from a height of more than 0.5 m	Reduce the suction height
Pump pressure drops during use	Water being sucked from an external tank	Connect machine to the mains water supply
	Inlet water too hot	Reduce temperature
	Nozzle clogged	Clean nozzle (fig.5)
	Inlet filter (L) fouled	Clean filter (L) (fig.5)
Motor "buzzes" but fails to start	Power supply voltage too low	Check that the voltage of the mains power supply line is the same as that on the data plate (fig.2)
	Voltage drop due to use of extension cable	Check characteristics of extension cable
	Machine not used for a long period of time	Contact an Authorised Service Centre
	Problems with TSS device	Contact an Authorised Service Centre
Motor fails to start	No electrical power	Check that the plug is firmly in the socket and that the mains voltage supply is present (*)
	Problems with TSS device	Contact an Authorised Service Centre
Water leakages	Seals worn	Have the seals replaced at your nearest Authorised Service Centre
	Safety valve tripped and discharging	Contact an Authorised Service Centre
Machine noisy	Water too hot	Reduce temperature (see technical data)
Oil leakages	Seals worn	Contact an Authorised Service Centre
Machine starts even with gun trigger released	High pressure system or pump circuit not watertight	Contact an Authorised Service Centre
No water delivery when gun trigger is depressed (with water inlet hose connected)	Nozzle clogged	Clean nozzle (fig.5)
Sprayer function		
Problems	Probable causes	Remedies
Pump pressurised but no liquid comes out	Solution too dense	Dilute with water
	Scale or restrictions in circuit	Flush with clean water and eliminate any restrictions. If the problem persists, contact an Authorised Service Centre.
	Filters or nozzles fouled	Check and clean filters (P5) and (P6) and nozzles (P4)
	Filters not fitted correctly	Clean filters (P5) / fit them correctly
	Tank empty	Fill tank



(\*) If the motor stops and does not restart during operation, wait 2-3 minutes before repeating the start-up procedure (**Overload cutout has been tripped**).

If the problem recurs more than once, contact the Authorised Service Centre.

**EN 12 HOW TO AVOID DAMAGING SURFACES****WARNING**

- 12.1 Using the machine to wash tyres may damage the tyre and can be dangerous.  
 12.2 Never point the high pressure jet straight at the tyre.  
 12.3 Always use the machine at the lowest pressure setting when cleaning in the vicinity of wheels and tyres.  
 12.4 Never use the "Turbo Lance" for washing any part of the vehicle.  
 12.5 For further information refer to section: "8.2.6 Recommended cleaning procedure".

**EC Declaration of conformity**

We, Annovi Reverberi S.p.A, of Bomporto (Modena), Italy, declare that the following AR Blue Clean machine(s):

Designation of machine	High pressure washer	
<b>Model No.</b>	<b>2.A DHS</b>	<b>2.A DHS PE</b>
Rated power	2,2 kW	2,2 kW

is (are) compliant with the following European directives: 2006/42/EC, 2014/35/EU, 2011/65/EU, 2015/863/EU, 2012/19/EU, 2014/30/EU, 2000/14/EC (Italian Legislative Decree 262/2002).

and are (is) manufactured in accordance with the following standards or standardised documents: EN 60335-1; EN 60335-2-79; EN 55014-1; EN 55014-2; EN 61000-3-2; EN 61000-3-3; EN 61000-3-11; EN 60704-1; EN 62233; EN 50581.

Name and address of the person appointed to issue the technical file: Stefano Reverberi / AR Managing Director Via ML King, 3 - 41122 Modena, Italy

The conformity assessment procedure required by Directive 2000/14/EC has been performed in accordance with Annex V.

<b>Model No.</b>	<b>2.A DHS</b>	<b>2.A DHS PE</b>
Measured sound power level:	90,3 dB (A)	90,3 dB (A)
Guaranteed sound power level:	93 dB (A)	93 dB (A)

Date: 06.11.2020 - **MODENA (I)**

Stefano Reverberi /Managing Director

**Warranty**

The validity of the warranty is in accordance with the relevant legislation in the country where the product is sold (unless otherwise stated by the producer). The warranty covers materials, construction and conformity defects during the warranty period, during which time the manufacturer will replace defective parts and repair the product if not excessively worn, or replace it.

The warranty does not cover components subject to normal wear and tear (valve, piston, water gasket, oil gasket, springs, O-rings, accessories such as the hose, trigger gun, brushes, wheels, etc.);

The warranty does not cover defects caused by or arising from:



- improper use, misuse, negligence,
- professional use or hire, if the product was sold for domestic use,
- failure to comply with the maintenance instructions provided in this manual,
- repair by unauthorised staff or centres,
- use of non-genuine parts or accessories,
- damage caused by transport, by dirt or foreign bodies, accidents,
- storage or warehousing problems.

Proof of purchase must be submitted to obtain warranty cover.

**For after-sales service, contact the store where the machine was purchased**



## Technical Data

Technical Data	Unit	2.A DHS	2.A DHS PE
Flow rate	l/min	5,5	5,5
Maximum flow rate	l/min	7,66	7,66
Pressure	MPa	10,7	10,7
Maximum pressure	MPa	16	16
Power	kW	2,2	2,2
Maximum inlet temperature	°C	50	50
Maximum inlet pressure	MPa	1	1
Trigger gun repulsive force at maximum pressure	N	13,4	13,4
Pump oil type	kg	-	-
Protection class	-	II / 	II / 
Motor insulation	Class	F	F
Motor protection	-	IPX5	IPX5
Voltage	V~/Hz	220-240~/50	220-240~/50
Maximum permitted electrical system impedance	Ω	-	-
Sound pressure level $L_{pA}$ (EN 60704-1) (K = 2.5 dB(A))	dB (A)	78,8	78,8
Sound power level $L_{WA}$ (EN 60704-1) (K = 2.5 dB(A))	dB (A)	93	93
Machine vibrations (K = 1 m/s <sup>2</sup> ):	m/s <sup>2</sup>	<2,5	<2,5
Weight	kg	11,6	11,6

## Sprayer Technical Data

Technical Data	Unit	2.A DHS	2.A DHS PE
Rated power	W	35	35
Tank capacity	l	0,8	0,8
Pressure	MPa	0,3	0,3
Max. pressure	MPa	0,4	0,4
Flow rate	l/min	0,3	0,3

**Subject to technical modification!**



Manufactured and distributed by: Annovi Reverberi S.p.A.  
Via M.L. King 3  
41122 Modena (Italy)  
[www.annovireverberi.it](http://www.annovireverberi.it)